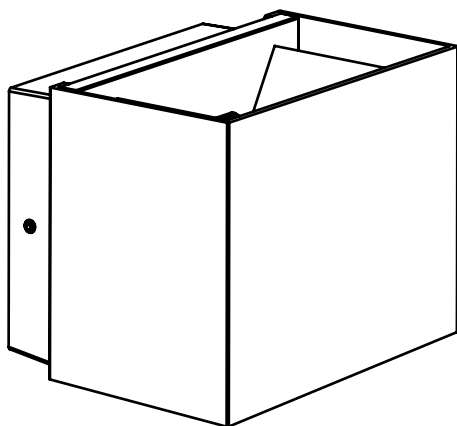


# **PROLUMIA<sup>®</sup>**

## **Pro-Cube**

Wall luminaire



### **USER / INSTALLATION MANUAL**

## ■ Precautions

1. Do not look directly at the light source for a long time during use.
2. Do not use the product under a high-temperature environment.
3. Do not cover flammable materials on the product during use.
4. Not support warranty with unauthorized disassembly, repair or replace any parts of the lamp.
5. When the light source reaches the end of its life, the entire luminaire should be replaced, cannot replace the light source.

## ■ Installation Instruction

### WARNING ⚡

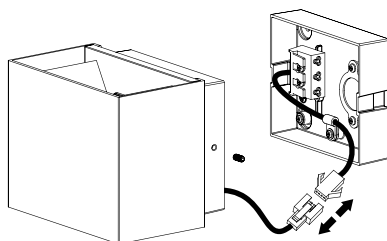
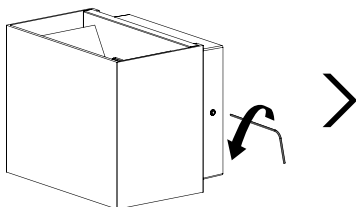
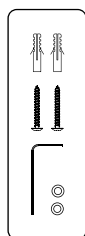
1. Switch off before installation.
2. Switch on only after complete installation and examination of the circuit.
3. Professional electrician for installation and maintenance only.



Turn Off  
Power Supply

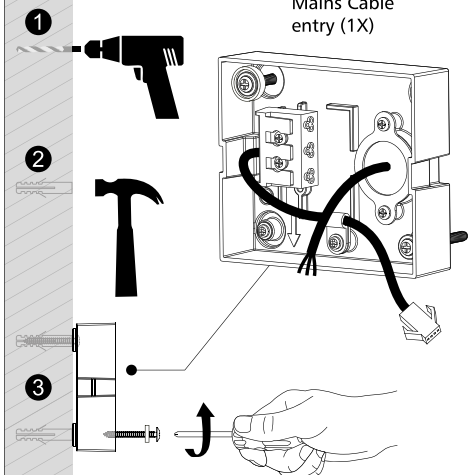


## ■ Wall mounted installation

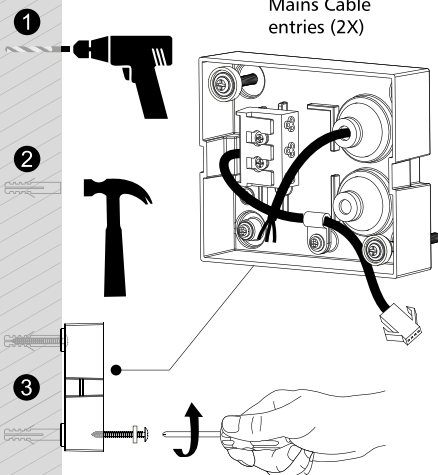


1

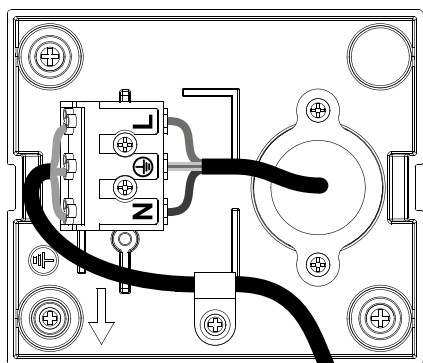
Mains Cable  
entry (1X)



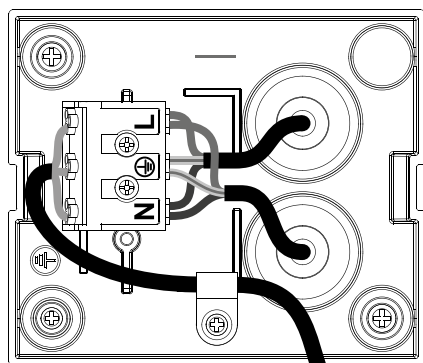
Mains Cable  
entries (2X)



2 2-1



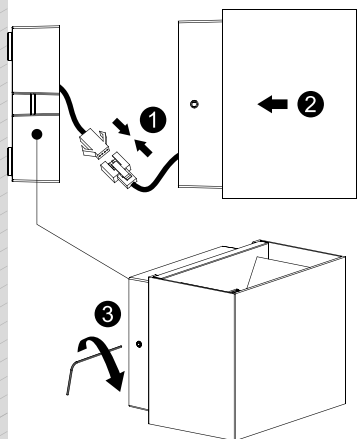
L — Switched  
 — Earth  
 N — Neutral



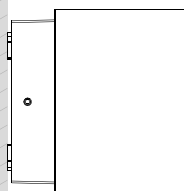
Splicing  
 wire  
 connection

L — Switched  
 — Earth  
 N — Neutral

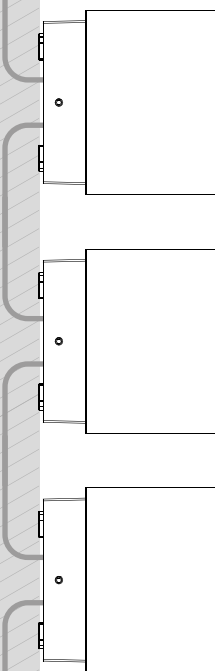
3 3-1



4



COMPLETE



COMPLETE

5 5-1



**40010400**

Pro-Cube - Up/Down Wall Luminaire, 120 x 100 x 97 mm, 2 x 5 W, On/Off, Black

3000 K, Ra80, 30-120° adjustable, IP65

IO24-01651

**PROLUMIA**

**Riga 10, 2993 LW Barendrecht  
The Netherlands**